

SOURCE:	ETSI
TITLE:	Lawful Interception and Retained Data Handover Interface standardisation
AGENDA ITEM:	Opening 8.3
CONTACT:	Peter van der Arend, TC LI Chairman

[gsc12\\_open\\_38](#)

## Lawful Interception in ETSI

### Short introduction on ETSI/TC LI Lawful Interception and Retained Data Handover standardisation

# Why Lawful Interception implementation in EU

**17th January 1995: EU Council of Ministers  
adopted resolution COM 96/C329/01 on Lawful Interception**

**The providers of public telecommunications networks and services  
are legally required to make available to the authorities the  
information necessary to enable them to investigate  
telecommunications**



**Main body in ETSI for  
LI Standards development and  
coordination is  
ETSI/TC LI**



# Why standardisation of LI handling

- ❑ **Easier to define own LI mechanism**
  - Guidance is given for network architecture
  - No need to define/invent complete own LI system
  - National options are possible
- ❑ **Less expensive LI products**
  - Manufacturers need to develop one basic product
  - National options are additional
- ❑ **Intercepted result is meeting international requirements by Law Enforcement Agencies**
  - Worldwide input
- ❑ **LI Standards in ETSI are actively developed and approved by involved parties**



# History of Lawful Interception work in ETSI

## ❑ ETSI/Technical Committee Security (TC SEC)

### ➤ Working Group Lawful Interception (SEC-WGLI) (1997)

- TR 101 944 v1.1.2      TR 102 053 v1.1.1      ES 201 158 v1.2.1

## ❑ ETSI/Technical Committee Lawful Interception (TC LI)

### ➤ Established as stand-alone TC in Oct 2002

- TR 101 943 v2.2.1      TR 102 503 v1.2.1      TR 102 519 v1.1.1
- TS 101 331 v1.2.1      TS 101 671 v2.15.1      ES 201 671 v3.1.1
- TR 102 528 v1.1.1
- TS 102 232-1 v2.1.1      TS 102 232-2 v2.2.1      TS 102 232-3 v2.1.1
- TS 102 232-4 v2.1.1      TS 102 232-5 v2.1.1      TS 102 232-6 v2.2.1



# Terms of Reference ETSI/TC LI

- ❑ To capture the **requirements** of “Law Enforcement Agencies” and translating those into requirements to be applied to technical specifications
- ❑ To develop and publish **handover interfaces**, and rules for the carriage of technology specific interception across these interfaces
- ❑ To develop a **set of standards** that allow ETSI standards to support industry compliance to the requirements of national and international law



# How ETSI/TC LI operates



- ❑ **Meetings**
  - Three plenary meetings a year are organised (35-70 participants)
  - In between if necessary Rapporteur's meetings can be organised on a specific issue
- ❑ **The meetings can be attended by ETSI members**
  - Non-ETSI members can participate by invitation of the chairman
- ❑ **Dedicated TC LI E-mail server and FTP server**
  - Open to all registered ETSI (full and associated) members
- ❑ **Producing reports and specifications on Lawful Interception and Retained Data**
- ❑ **Promoting globally ETSI Lawful Interception standards amongst operators and national bodies**
  - LI Presentations at Workshops and Conferences

# Participation in ETSI/TC LI

- ❑ **Law Enforcement Agencies / Governments organisations**
  - NL, UK, DE, AS, S, GR, ES, FR, RU, FIN, IT, NO, CY, HU
  - USA, CA, AU, KR
- ❑ **Operators**
  - KPN (NL), DT (DE), BT (UK), TeliaSonera (S), Inmarsat, Telenor (NO), UPC, Telecom Italia, Telstra (AU), T-Mobile (DE), Vodafone (DE)
- ❑ **Manufacturers (switch)**
  - Nokia Siemens Networks, Ericsson, Cisco, Alcatel Lucent, Nortel, Marconi, Motorola
- ❑ **Manufacturers (mediation / LEA equipment)**
  - Pine Digital Security, Aqsacom, ETI, VeriSign, Siemens, GTEN, Utimaco Safeware, Verint, Detica, NICE Systems, Thales, AREA, ATIS Systems, SS8, Spectronic, Group 2000, ZTE

**Manufacturers may be active in all areas**





# Activities in ETSI/TC LI on Lawful Interception

# LEA requirements (step 1)

## ❑ *ETSI TS 101 331*

### Requirements of Law Enforcement Agencies

- Provides guidance in the area of co-operation by network operators/service providers with the lawful interception of telecommunications
- Provides a set of requirements relating to handover interfaces for the interception



# Types of Lawful Intercepted data

(TS 101 331)

## ❑ Content of Communication (CC)

- Information exchanged between two or more users of a telecommunications service

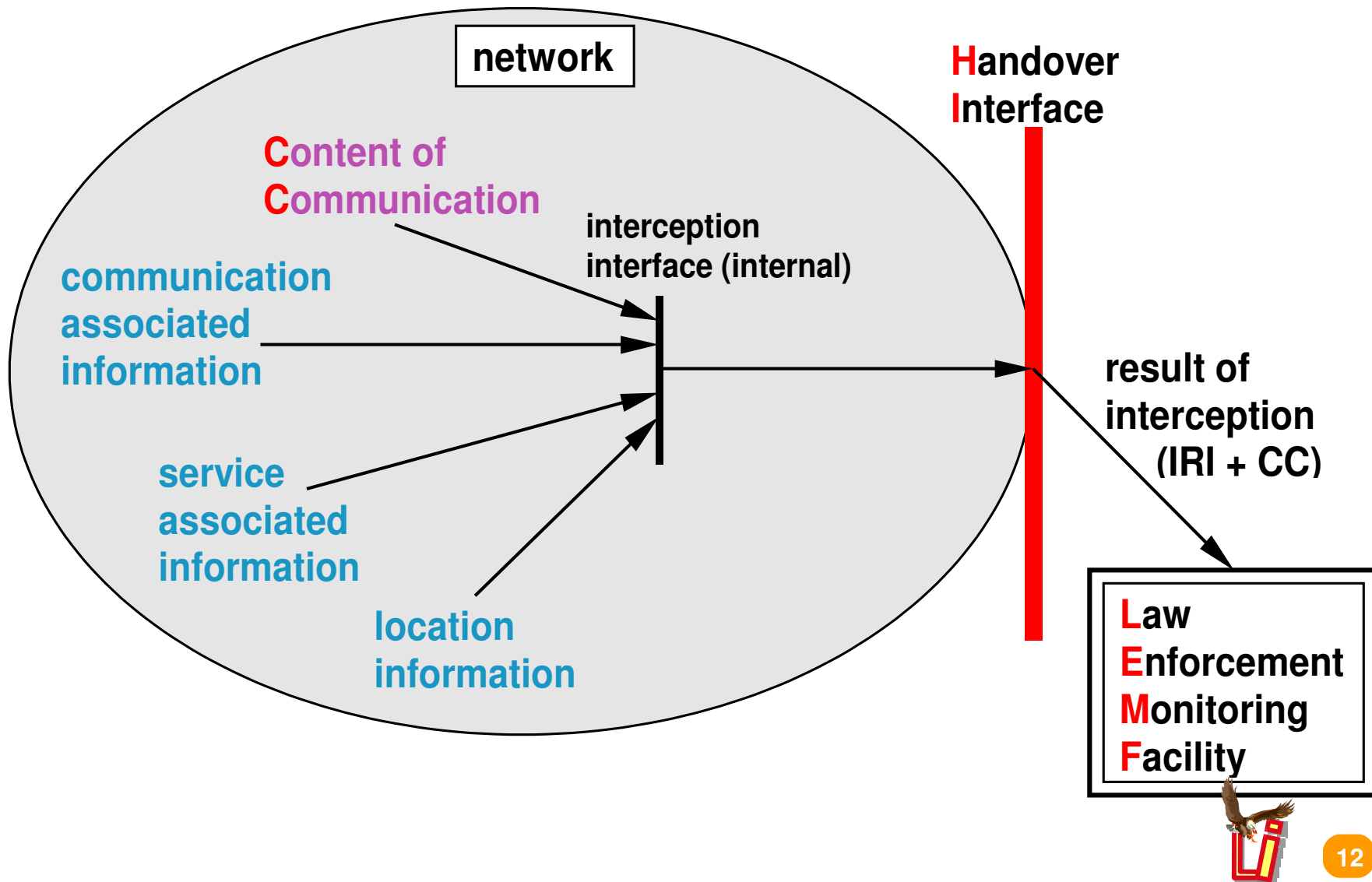
## ❑ Intercept Related Information (IRI)

- Collection of information or data associated with telecommunication services involving the target identity:
  - **communication associated information** or data (including unsuccessful communication attempts)
  - **service associated information** or data (e.g. service profile management by subscriber)
  - **location information**



# General network arrangements

(TS 101 331)



# General on security of LI feature

- ❑ **Protection of Target information**
  - Protection of Rooms, Systems, Connections, Signalling
- ❑ **Local staff**
  - Only authorised personnel may have knowledge that interception has been activated on a target
  - Unauthorised persons shall not be able to detect that any interception is active on certain subscribers
- ❑ **Parties in the communications**
  - Neither the target nor the other parties involved in the communications should be able to detect that interception is (de)activated or that interception is taking place
- ❑ **Other users**
  - Other users of any telecommunications service should not be able, by any means, to detect that any interception facility has been (de)activated or that interception is taking place



# Actual Security work item in TC LI

## ❑ *ETSI DTR/LI-00044*

**Security framework in Lawful Interception and Retained Data environment**

- **defining a security framework for securing Lawful Interception and Retained Data environment of the CSP and the Handover of the information**

**CSP= Communication Service Provider**



## LI Handover Interface (step 3)

### ❑ *ETSI TS 101 671 (ETSI ES 201 671)*

#### Handover Interface for the Lawful Interception of Telecommunications Traffic

- Generic flow of information and procedures and information elements, applicable to any future telecommunication network or service
- Circuit switched and packet data
- Covered technologies:  
PSTN, ISDN, GSM, UMTS (CS), GPRS, TETRA  
wireline NGN (including PSTN/ISDN emulation)  
wireline IMS PSTN simulation

### ❑ *ETSI TR 102 053*

#### Notes on ISDN LI functionalities

- Implementation advice of TS 101 671 for operators



# Handover Interface ports

(TS 101 671)

- ❑ **HI1: for administrative information**
  - Request for lawful interception: target identity, LIID, start/duration, IRI or IRI+CC, IRI delivery address, CC delivery address, ...
  - Management information
  
- ❑ **HI2: for delivery of Intercept Related Information**
  - All data related to establish the telecommunication service and to control its progress
  - Correlation information
  
- ❑ **HI3: for delivery of Content of Communication**
  - Transparent en-clair copy of the communication
  - Correlation information

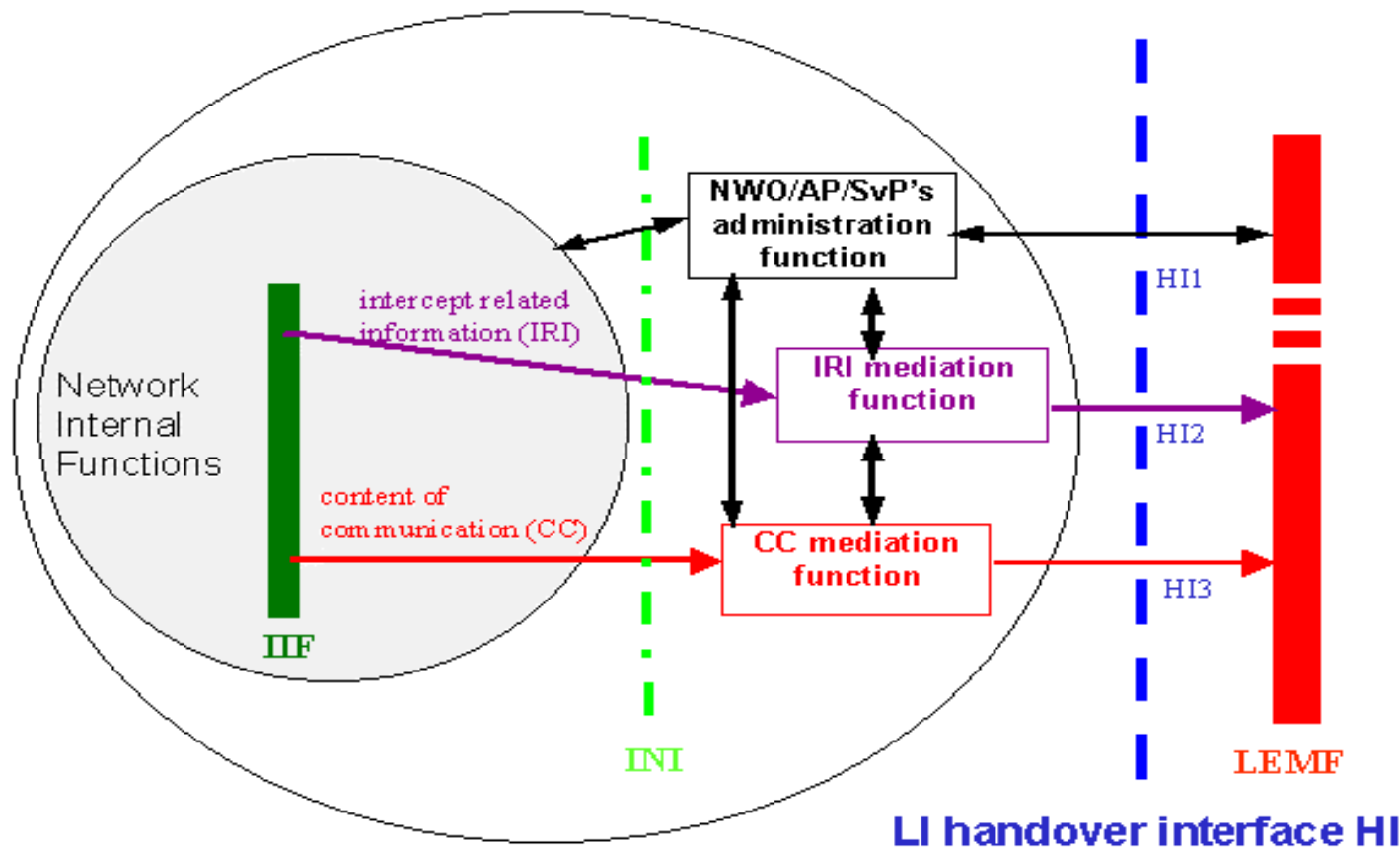




# Handover Interface Concept (TS 101 671)

NWO/AP/SvP's domain

domain



IIF: internal interception function  
INI: internal network interface

HI1: administrative information  
HI2: intercept related information  
HI3: content of communication



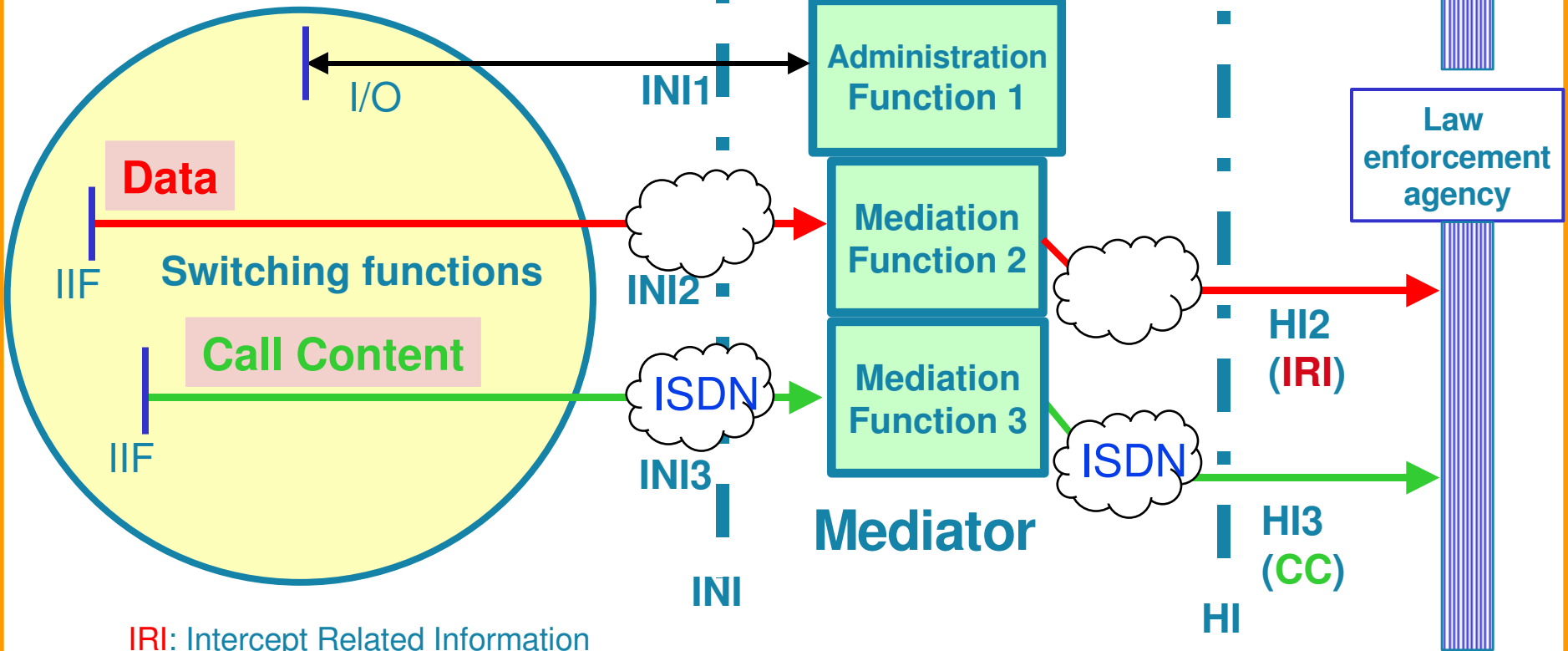
# Parameters in IRI records

(TS 101 671)

- ☐ **LI related identities**
  - LIID, target, network operator, network element, call ID, ...
- ☐ **Timestamp**
- ☐ **Intercepted call direction (to / from target)**
- ☐ **Intercepted call state (in progress, connected)**
- ☐ **Address: Calling party / Called party / Forwarded-to-party / ..**
  - E164, TEI, IMSI, IMEI, MSISDN, SIP URI, ...
- ☐ **Ringing tone duration / conversation duration**
- ☐ **Type of intercept:**
  - PSTN, ISDN, GSM (CS), TETRA, GPRS (PD), UMTS (CS)
- ☐ **Supplementary service information**
- ☐ **Location information**
- ☐ **National parameters**
- ☐ **IRI record type (Begin, Continue, End, Report)**
- ☐ ....



# Interception network ISDN/PSTN Services step-by-step



IRI: Intercept Related Information  
CC: Content of Communication  
INI: Internal Network Interface  
IIF: Internal Intercepting Function  
AI: Administrative Interface

HI: Handover Interface  
HI1: Administration  
HI2: Intercept Related Information  
HI3: Content of Communication



# Architecture Reports from TC LI

## ❑ *ETSI TR 101 943*

### Concepts of Interception in a Generic Network Architecture

- High-level informative overview and principles regarding implementation of LI for telecommunications

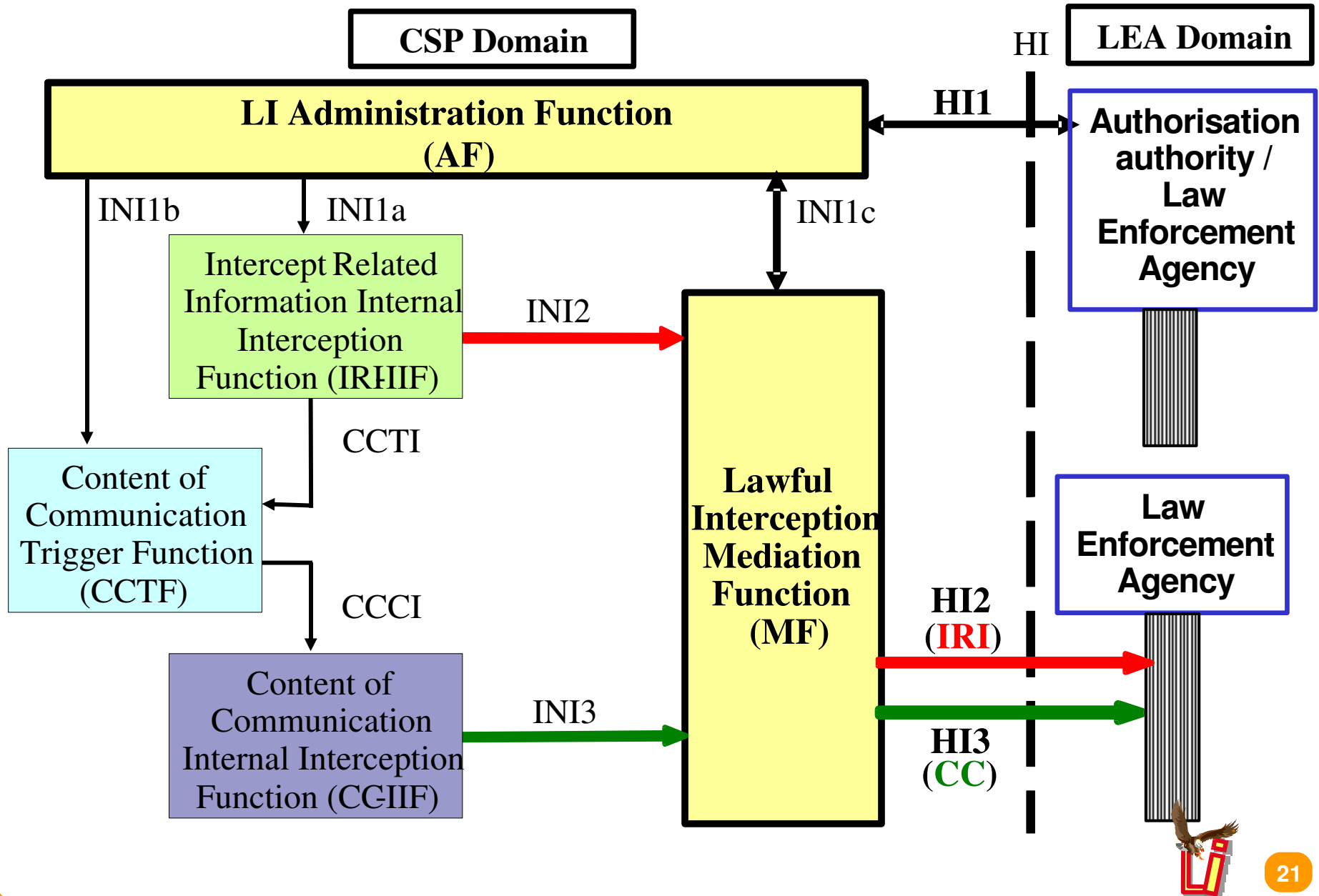
## ❑ *ETSI TR 102 528*

### Interception domain Architecture for IP networks

- High level reference architecture for supporting lawful interception for IP networks
- High level description of Internal Network Functions and Interfaces.
- Application of the reference model to voice and multimedia over IP services, data layer 3 and layer 2 services
- Reference model in the network operator and communication service provider domain



# Reference model for LI in IP networks (TR 102 528)



# Handover of LI via IP Networks (step 3)

## ❑ *ETSI TS 102 232 part 01 (formerly TS 102 232)*

### Delivery of IP based interception

- General aspects of handover for HI2 and HI3 (as defined by TS 101 671) where the underlying transport system is based on the Internet Protocol stack.
- Modular approach used for specifying IP based handover interfaces
- Header(s) to be added to IRI and CC sent over the HI2 and HI3 interfaces
- Protocols for the transfer of IRI and CC across the handover interfaces
- To be used in conjunction with other deliverables that define the service-specific IRI data formats
- Protocol is defined according ASN.1 description  
ITU-T Recommendation X.680 (Abstract Syntax Notation One)



# Generic header information

*(TS 102 232-1)*

- ❑ **Generic header information to be added to HI2 and HI3 traffic**
  - **LIID**
  - **Authorization country code**
  - **Communication Identifier**
  - **Sequence number**
  - **Timestamp**
  - **Payload direction**
  - **Payload type**
  - **Interception Type**
  - **IRI record type (Begin, Continue, End, Report)**
  - **...**



# IP service-specific details (applications)

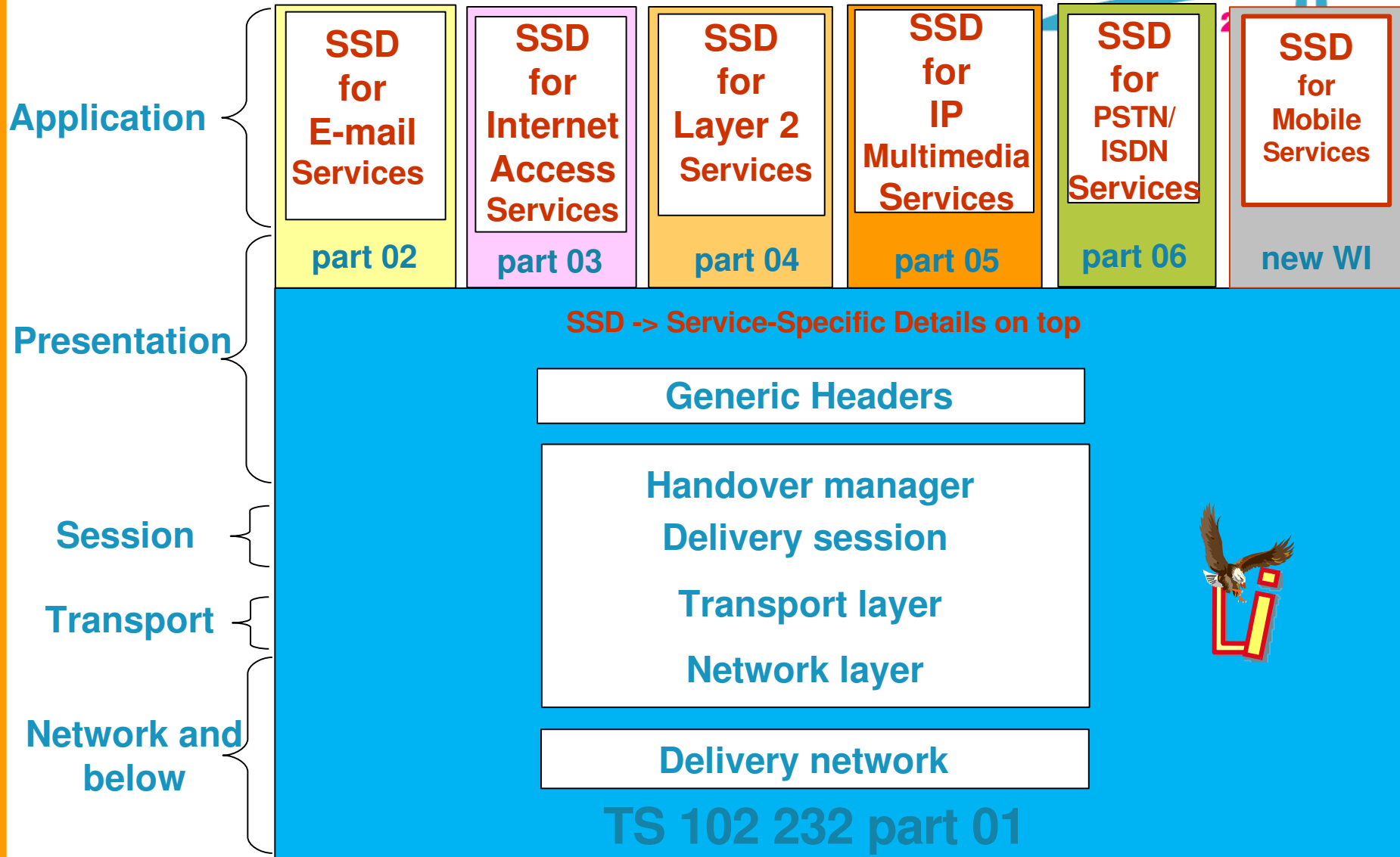
- ❑ *ETSI TS 102 232 part 02* (formerly TS 102 233)  
Service-specific details for **E-Mail** Services
  - Description for handover of E-mail messages; MTP, POP3, IMAP4
- ❑ *ETSI TS 102 232 part 03* (formerly TS 102 234)  
Service-specific details for **Internet Access** Services
  - Description for handover of Internet Access Information and TCP/IP information; DHCP, RADIUS
- ❑ *ETSI TS 102 232 part 04* (formerly TS 102 815)  
Service-specific details for **Layer 2** Services
  - Description for LI functionality of Layer 2 access
- ❑ *ETSI TS 102 232 part 05*  
Service-specific details for **IP Multimedia** Services
  - Based on SIP and RTP, and services described by ITU-T H.323, H.248
- ❑ *ETSI TS 102 232 part 06*



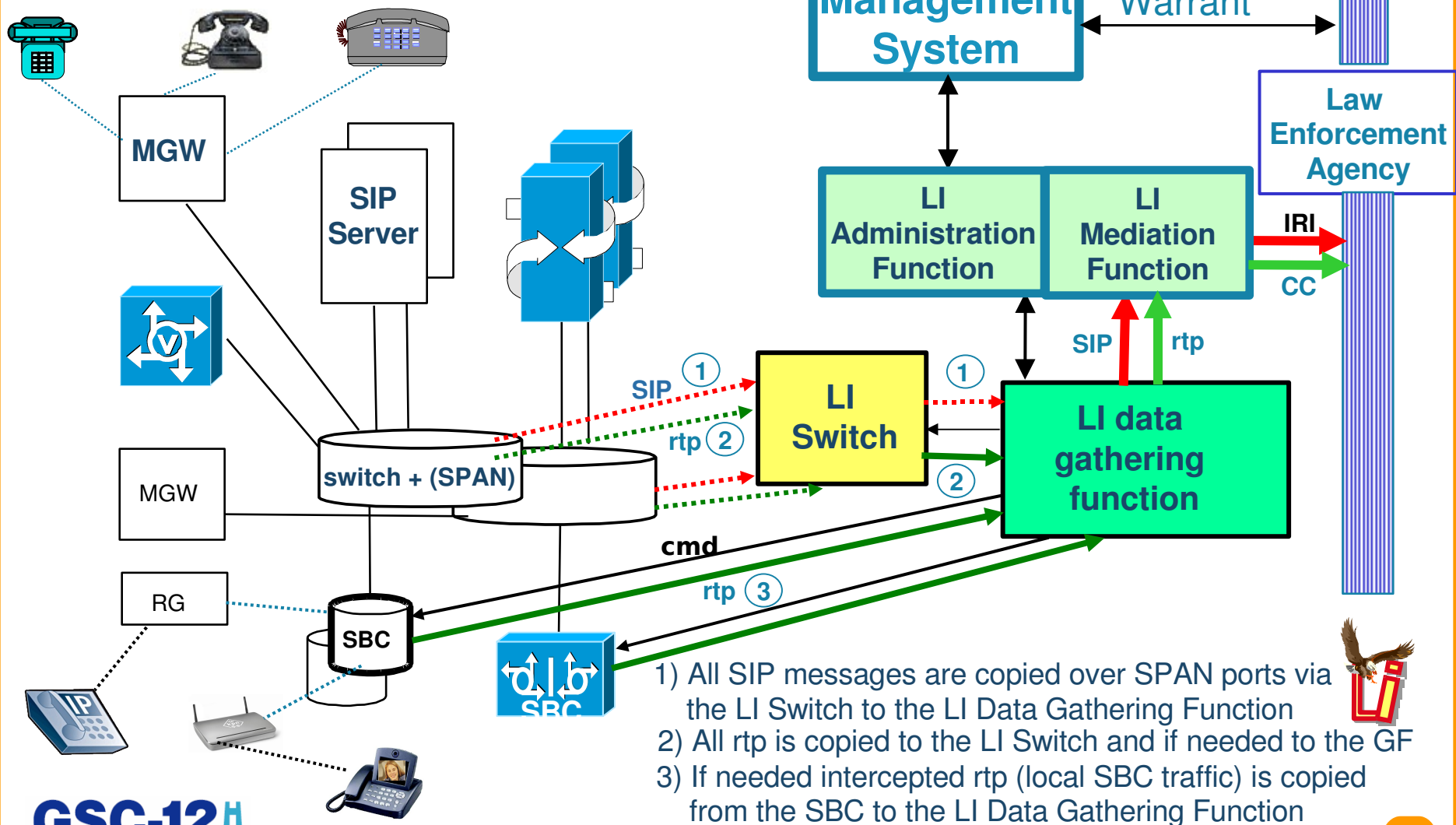


# TS 102 232 IP HO Family

## GSC-12



# LI possibility on a VoIP MM platform



# LI specifications in 3GPP (UMTS)

- ❑ *ETSI TS 133 106* (3GPP TS 33.106)  
Lawful interception requirements
  - provides basic interception requirements
  - partly based on ETSI TS 101 331
- ❑ *ETSI TS 133 107* (3GPP TS 33.107)  
Lawful interception architecture and functions
- ❑ *ETSI TS 133 108* (3GPP TS 33.108)  
Handover interface for Lawful Interception

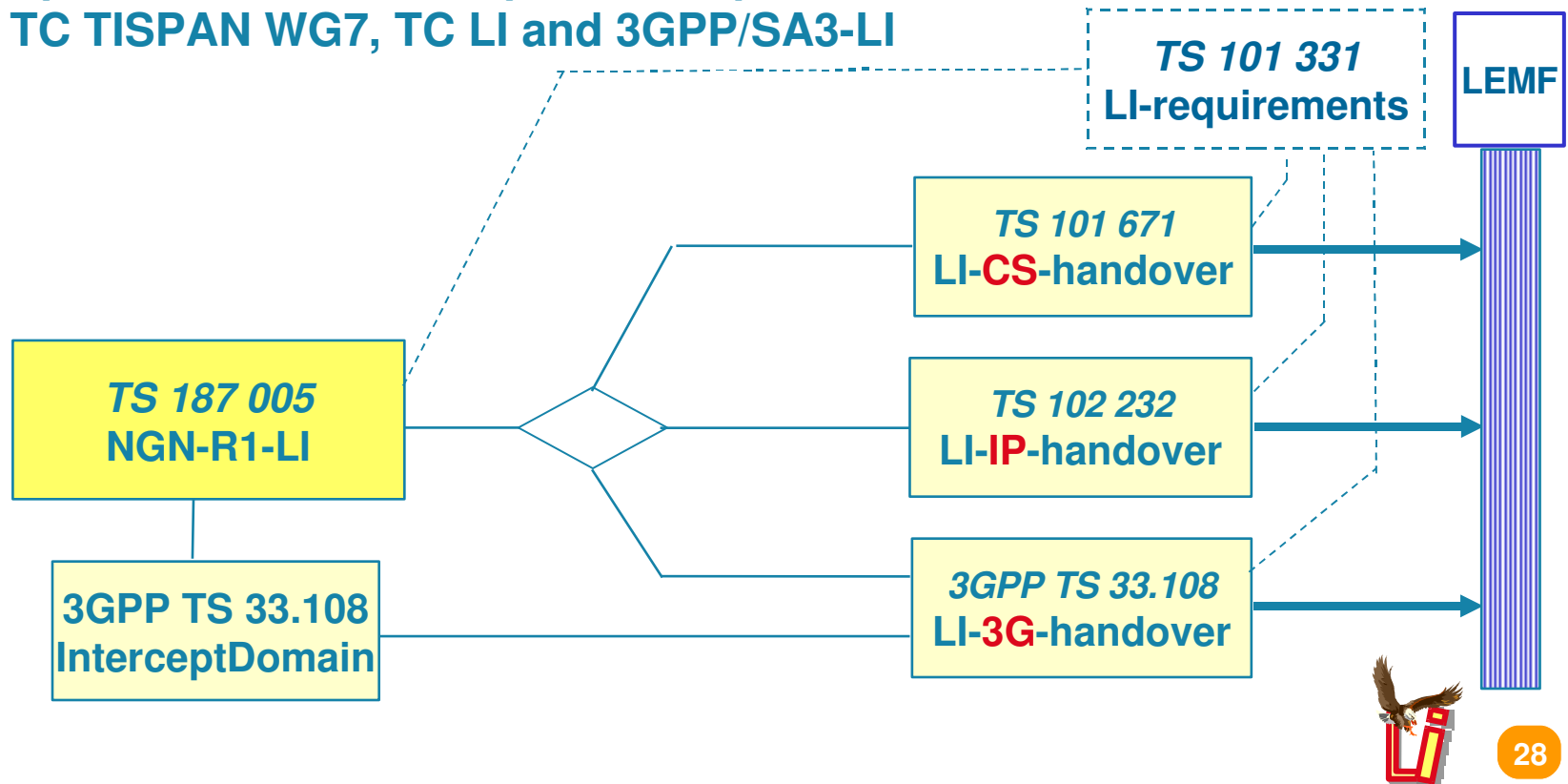


A GLOBAL INITIATIVE



# NGN Lawful Interception

- ❑ **ETSI TS 187 005 (TC TISPAN)**  
NGN Lawful Interception; Lawful Interception functional entities, information flow and reference points
- Specification is developed in cooperation between TC TISPAN WG7, TC LI and 3GPP/SA3-LI



# Actual LI working/study issues

## TC LI

- ❑ **ETSI DTS/LI-00042-7** (to become -> TS 102 232 part 07)  
**Service-Specific Details for Mobile Services (IP HandOver)**
- ❑ **Maintenance of existing LI specifications**
  - especially TS 101 331, TS 101 671 (CS) and TS 102 232-family (IP)
- ❑ **Work may be started on Service-Specific Details for Lawful Interception related to IP-TV**
- ❑ **ETSI DTR/LI-00044**  
**Security framework in Lawful Interception and Retained Data environment**



# **Activities in ETSI/TC LI on Retained Data Handover Interface**

# Why study on Retained Data in EU

**15th of March 2006: the European Parliament  
and the Council of the European Union adopted  
Directive 2006/24/EC on Data Retention**



**Data generated or processed in connection with  
the provision of  
publicly available electronic communications services or of  
public communications networks  
need to be retained**



# Applicability Directive

- ❑ The **content** of the communication is not part of the directive
  
- ❑ **Data to be Retained**
  - Successful and unsuccessful communication attempts
  - Wireline network telephony
  - Wireless network telephony
  - Internet access
  - Internet e-mail
  - Internet telephony
  
- ❑ Proportional requirements shall be defined by each Member State in its national law



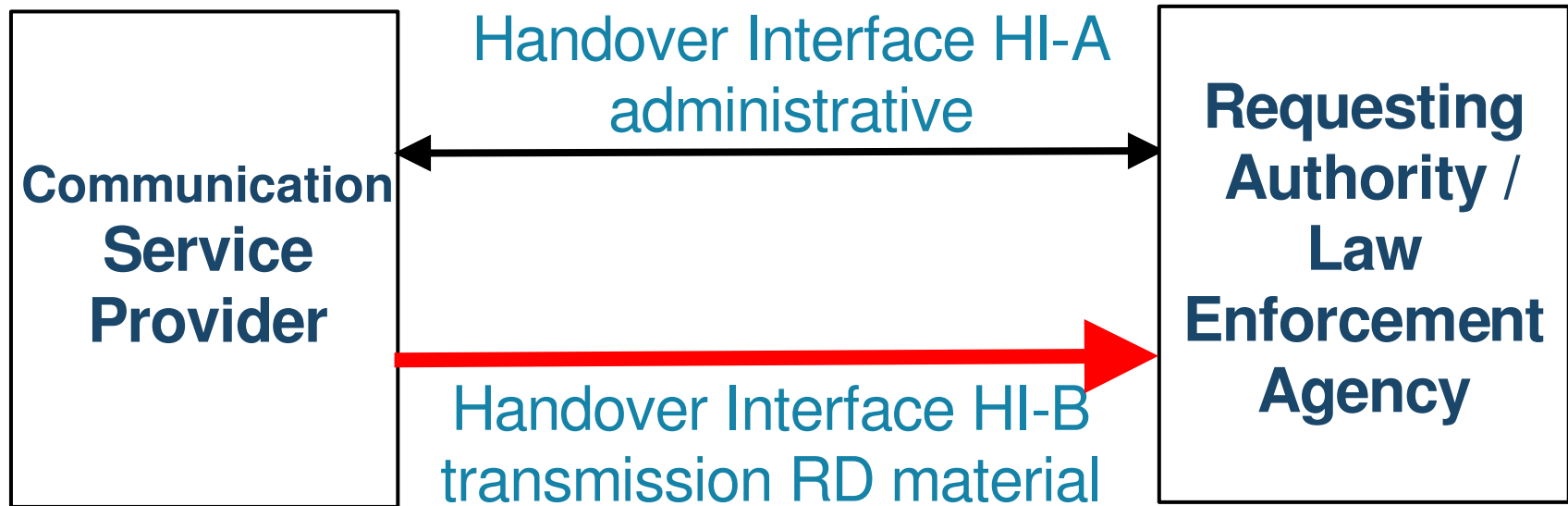


# Categories of data to be retained

- ☐ data to trace and **identify the source** of a communication
- ☐ data to **identify the destination** of a communication
- ☐ data to identify the **date, time and duration** of a communication
- ☐ data to identify the **type** of communication
- ☐ data to identify users' communication **equipment** or what purports to be their equipment
- ☐ data to identify the **location** of mobile communication equipment

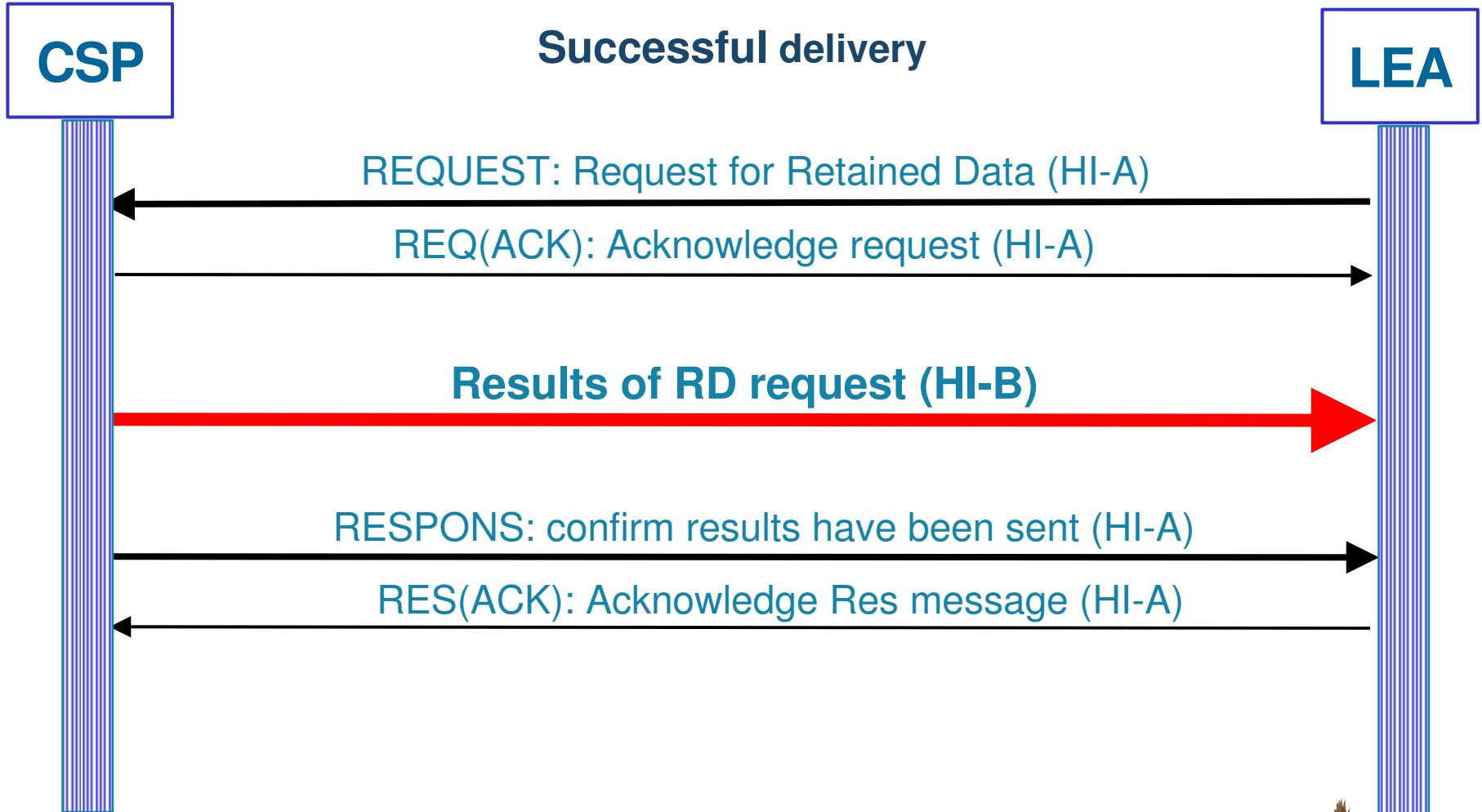


# Retained Data Handover Interface



# Retained Data Handover Signalling principle

Successful delivery



# Modular approach RDHI specification

## Framework for Retained Data Handover Interface

Annex on  
PSTN /  
ISDN  
services

Annex on  
GSM and  
other mob  
services

Annex on  
Internet  
access  
services

Annex on  
Internet  
e-mail  
services

Annex on  
IP Multi-  
media  
services



# Actual RD working/study issues in TC LI

## ❑ *ETSI DTS/LI-00039*

### Requirements of LEAs for handling Retained Data

- guidance and requirements for the delivery and associated issues of retained data of telecommunications and subscribers
- set of requirements relating to handover interfaces for retained data
- requirements to support the implementation of Directive 2006/24/EC

## ❑ *ETSI DTS/LI-00033*

### Handover interface for the request and delivery of retained data

- handover requirements and handover specification for the data that is identified in EU Directive 2006/24/EC on retained
- considers both the requesting of retained data and the delivery of the results
- defines an electronic interface





More details on **ETSI/TC LI** can be found on:

*<http://portal.etsi.org/li/Summary.asp>*

Chairman TC LI: [Peter@lawfulinterception.com](mailto:Peter@lawfulinterception.com)

[Peter@DataRetention.eu](mailto:Peter@DataRetention.eu)

LI specifications and reports are freely downloadable from  
ETSI Website *<http://pda.etsi.org/pda/queryform.asp>*



